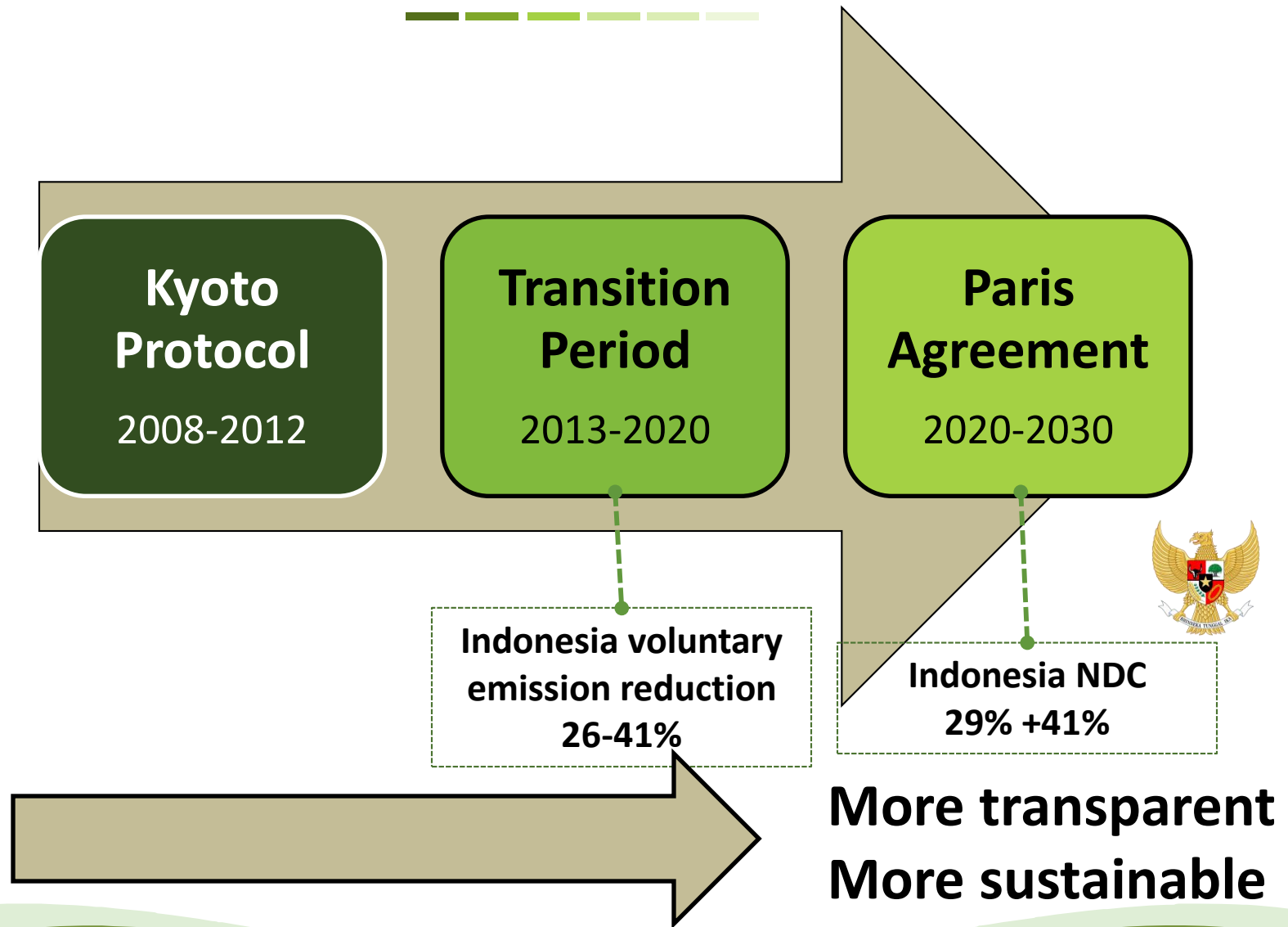




# **Jejaring Indonesia Rendah Emisi (JIRE) or Indonesia Low Emission Network (ILEN)**

Dicky Edwin Hindarto

# We are at the end of transition period



# Indonesia NDC

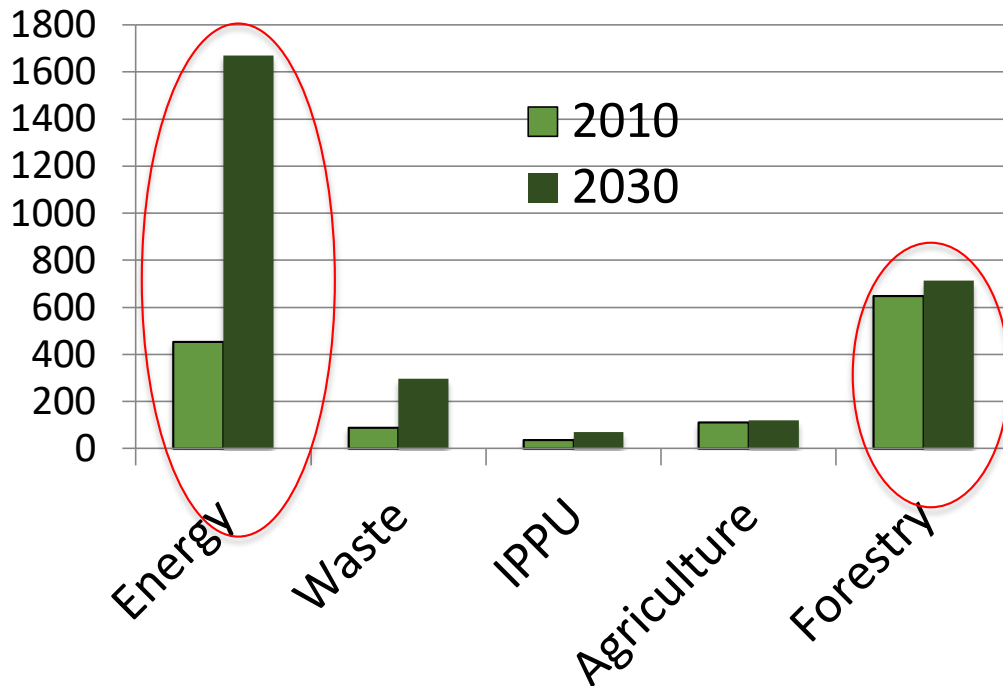
Sector	Level of GHG emission in 2010* (Million Ton CO <sub>2</sub> e)	Level of GHG emission in 2030			Amount of GHG emission reduction				Growth rate of BAU per year (2010-2030)	Growth rate per year 2000-2012
		BAU	CM1	CM2	Million Ton CO <sub>2</sub> e		% Compare to total BAU			
					CM1	CM2	CM1	CM2		
Energy	453.2 →	1669	1355	1271	314	398	11%	14%	6.7%	4.5%
Waste	88	296	285	270	11	26	0.38%	1%	6.3%	4.00%
IPPU	36	69.6	66.85	66.35	2.75	3.25	0.10%	0.11%	3.4%	0.10%
Agriculture	110.5	119.6	110.4	115.9	9	4	0.32%	0.13%	0.4%	1.30%
Forestry*	647 →	714	217	64	497	650	17.2%	23%	0.5%	2.70%
TOTAL	1334	2869	2034	1787	834	1081	29%	38%	3.9%	3.20%

\*Including forest fire

**CM1** = Counter Measure 1 (Unconditional Mitigation Scenarios)

**CM2** = Counter Measure 2 (Conditional Mitigation Scenarios)

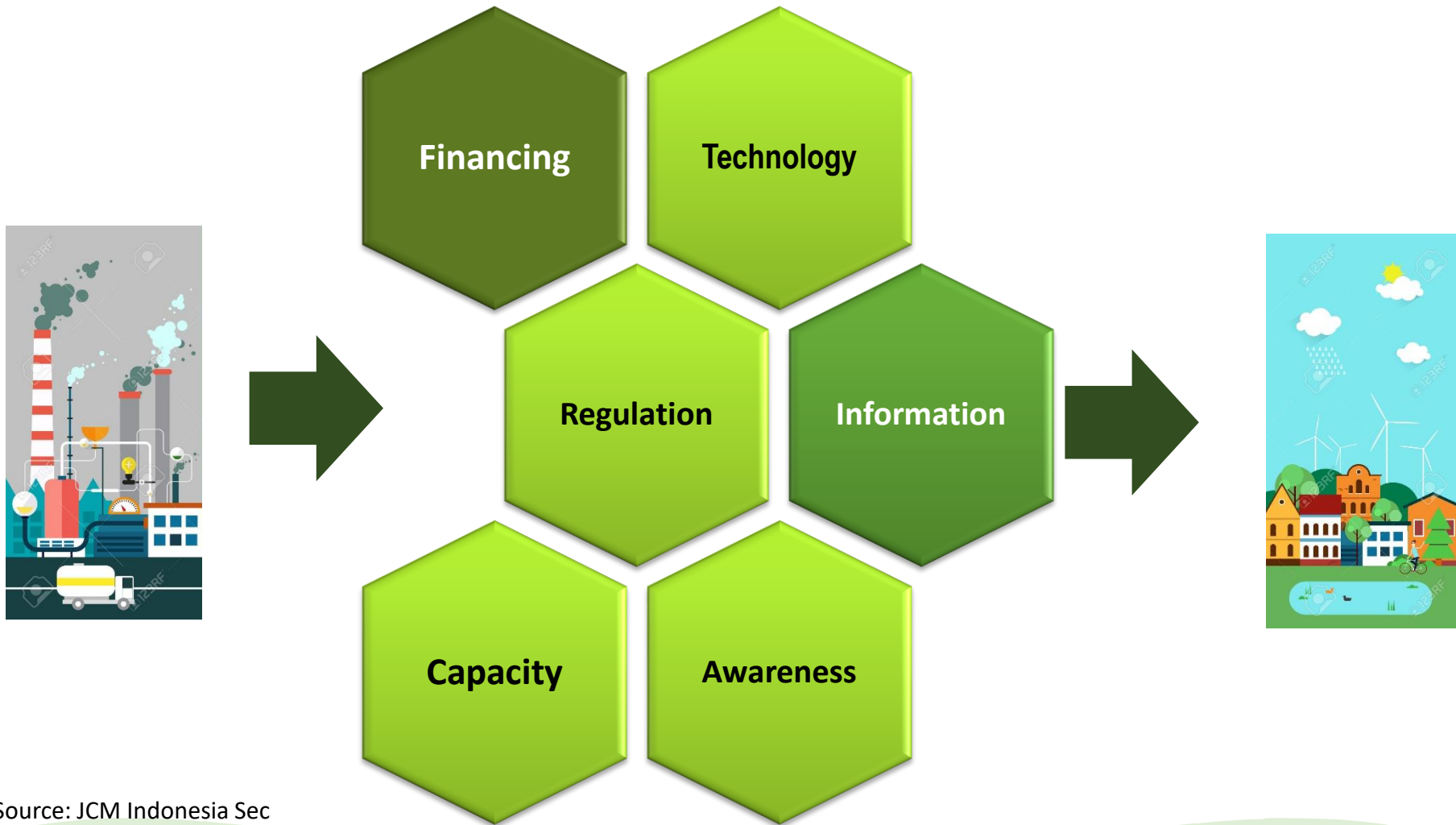
# Business as Usual Emission: 2010 vs 2030



- GHG emission is driven by economic (GDP) and population growths;
- Lack of support in promoting renewable energy, energy conservation, and inefficient use of fossil fuels have made GHG emission reduction targets very hard to be achieved.
- There is an urgent need to shift the economic paradigm towards sustainable green development path.

- ✓ GHG emission from energy sector will hike significantly by 2030. It will be much higher than the emission from forestry and land use sector.
- ✓ This is the reason why clean energy programs is one of the best options for shifting the investment toward low emission development.

# Barriers to implement low carbon development



# Barriers for private sector



**Reliability of New  
Technology**

**Environmental  
Awareness**

**Relationship & Trust to  
Partner**

**High Initial Capital Costs**

**Currency Risk**

**Transparency and  
Accountability**

**Technical Barrier**

**Profit Sharing**

**Communication and  
Understanding Among  
Ministeries**

**Clarity of Future Cost &  
Responsibilities**

**Procurement Risk**

**Regulatory Barrier**

# Steps toward establishment of JIRE

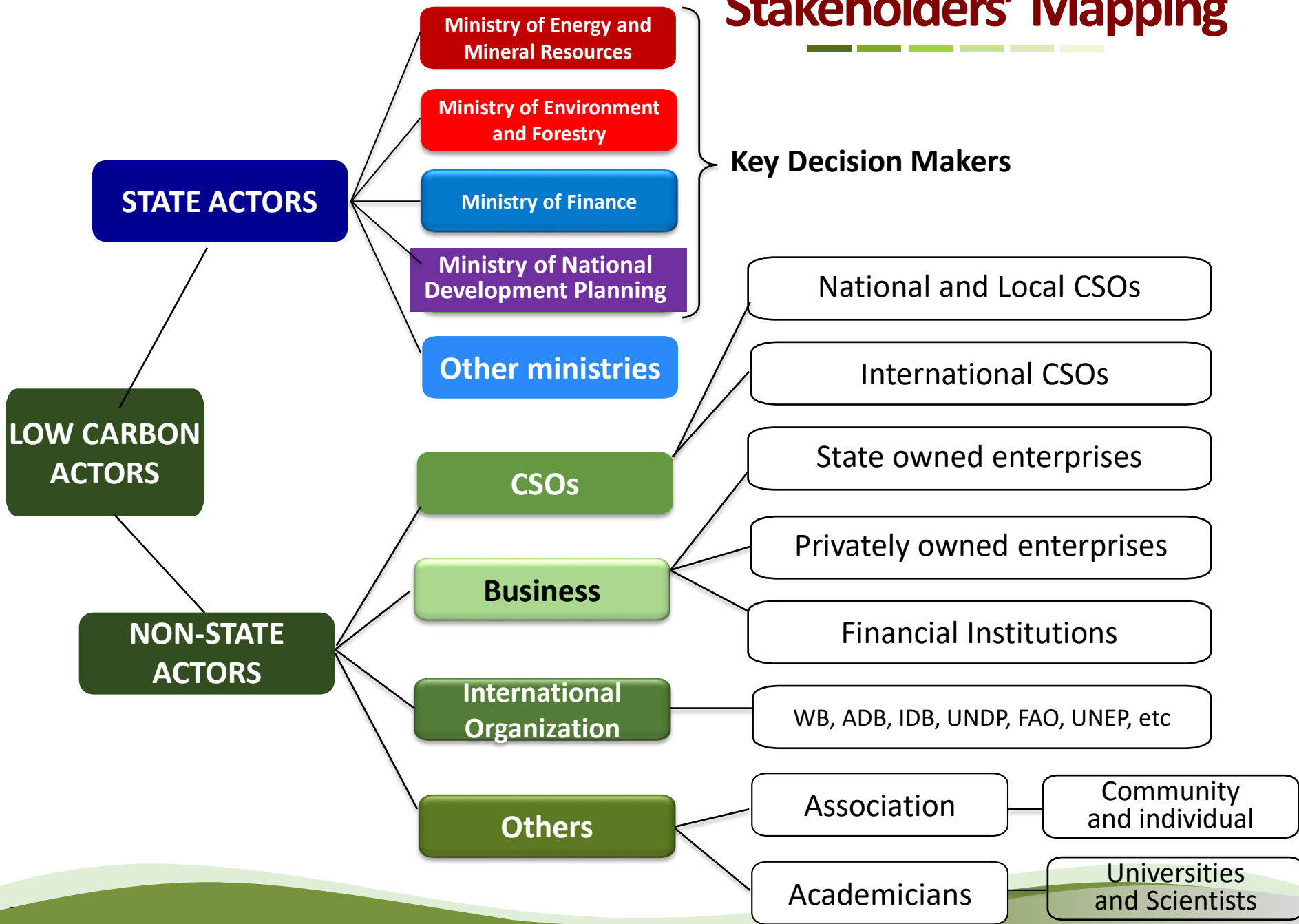
---

## What YMH have been doing ?



- Stakeholder's mapping
  - Survey
  - Interviews
    - FGD
- Communication strategy
- Network initiative launching
  - Network development

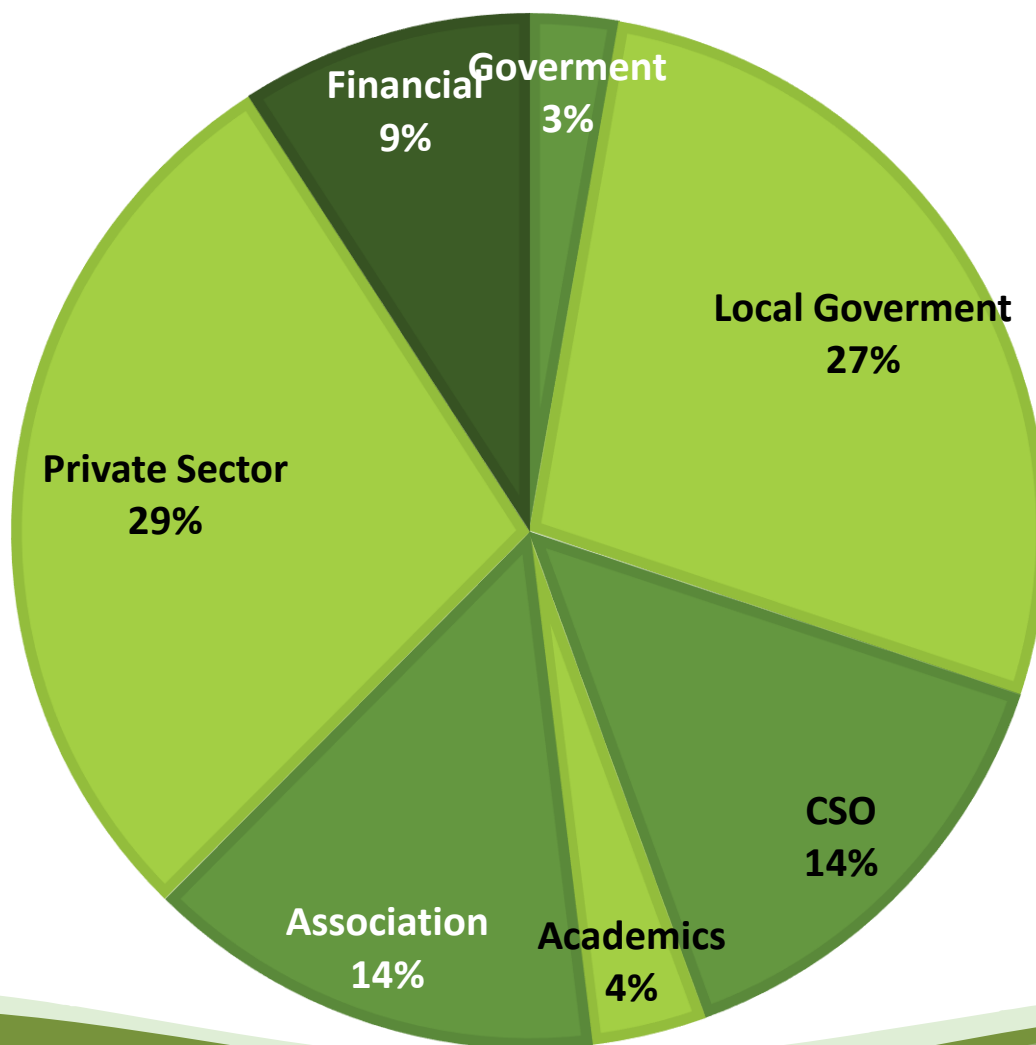
# Stakeholders' Mapping



# Stakeholders' Mapping

■ Government
■ Local Government
■ CSO
■ Academics
■ Association
■ Private Sector
■ Financial

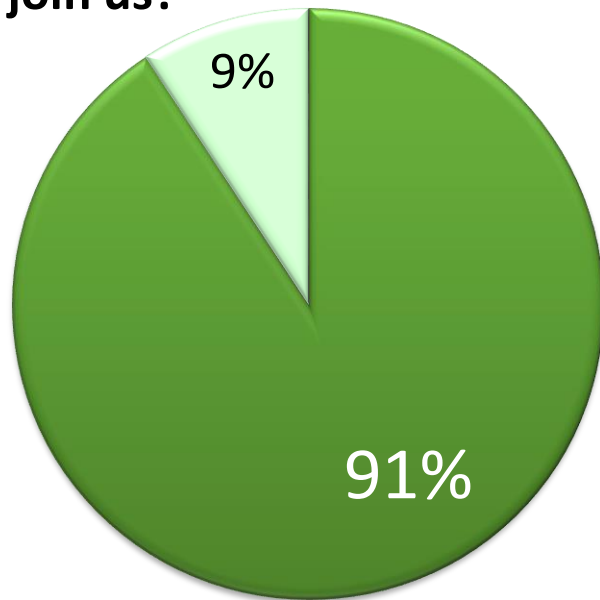
The stakeholder's mapping was developed on the basis of their activities in climate change related issues



The Stakeholder	
Government	10
Local Gov't	99
CSO	52
Academics	13
Association	52
Private sect	103
Financial	33
Total	362

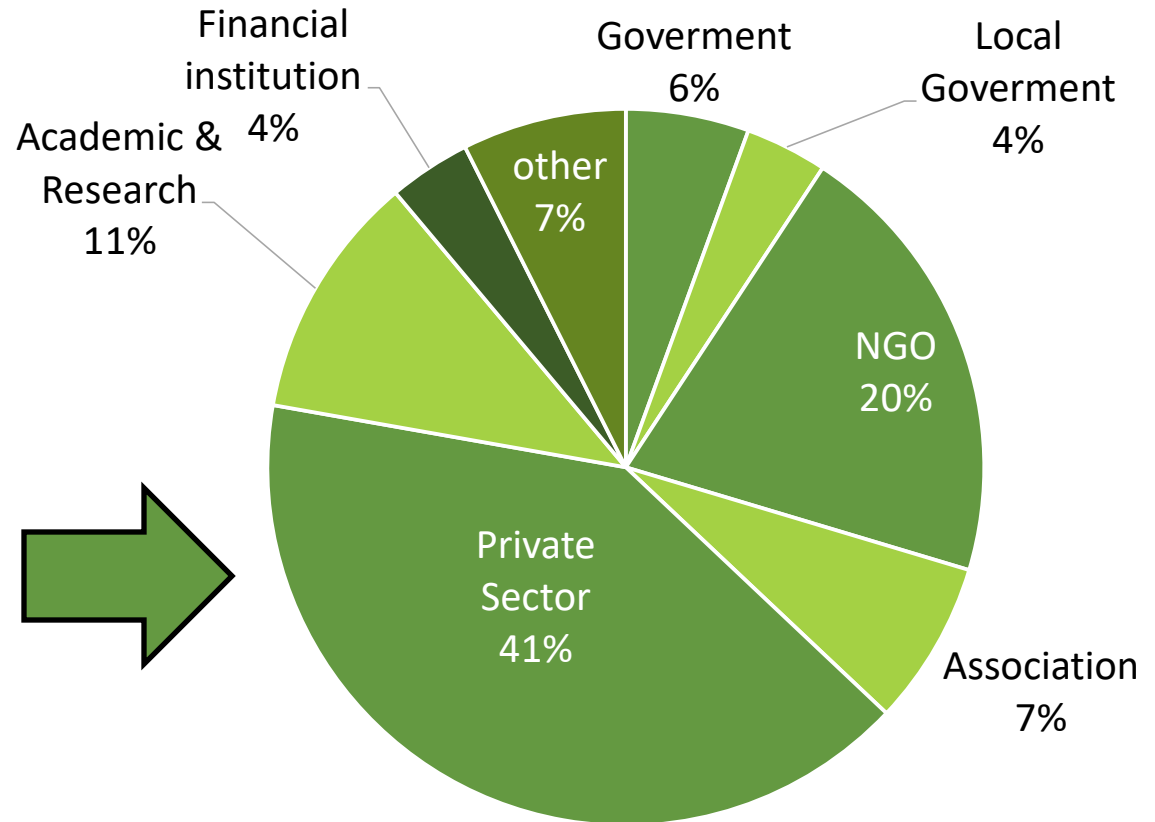
# Result of YMH Survey

If we want to establish a network and share on low carbon development issues, would you like to join us?



■ yes ■ no

## Who say yes???



- Government
- Local Government
- NGO
- Asosiation
- Private Sector
- University/research organization
- Financial institution
- other

# JIRE position

The diagram features a large green arrow pointing right, representing a progression or goal. Inside this arrow, there are two horizontal arrows: an orange one at the top labeled 'Non-government' and a light green one at the bottom labeled 'Government'. A yellow double-headed vertical arrow labeled 'JIRE' connects these two horizontal arrows. To the right of the main arrow, there are two groups of text: 'MDG's' with 'sustainable technology' and 'sustainability' below it, and 'NDC targets' with 'low carbon' and 'green living' below it. The background has some green wavy lines at the bottom.

**MDG's**

sustainable  
technology

*sustainability*

**Non-government**

**JIRE**

**Government**

**NDC  
targets**

low carbon

green living

# What JIRE will do?

- ✓ to improve and share information and knowledge on low emissions technology
- ✓ to share best practices amongst the members
- ✓ to improve access to low carbon financial resources
- ✓ to increase private sector involvement in implementing low carbon development policies in Indonesia
- ✓ to develop and review low carbon development related policies.



# JIRE members

---

**More than 60 organizations confirmed to join JIRE...**

- 9 association**
- 4 ministries and government body**
- 4 local government**
- 4 individual experts``**
- 5 international organizations**
- 1 media**
- 16 NGOs**
- 27 private sectors**
- 11 universities and research institute**



# JIRE members

---

**More than 60 organizations confirmed to join JIRE...**

- 9 association**
- 4 ministries and government body**
- 4 local government**
- 4 individual experts``**
- 5 international organizations**
- 1 media**
- 16 NGOs**
- 27 private sectors**
- 11 universities and research institute**



# Plan ahead



- 1. Setting up all of communication tools**
  - 2. Communication platform development**
    - a. Knowledge management**
    - b. Matchmaking process for financing**
  - 3. JIRE connection to international sources and funding**
  - 4. JIRE members workshop**
  - 5. Policy advisory**
- 

# We start it with the first step together

Greening Indonesia Together

ADD A MENU

Q

## Formulir Keikutsertaan Jejaring Indonesia Rendah Emisi (JIRE)

Dengan mengisi informasi ini, organisasi dan unit kerja Bapak/Ibu otomatis akan kami masukkan sebagai anggota Jejaring Indonesia Rendah Emisi.

[KLIK DISINI](#)

SLIDER

Edit The Featured Pages



Jejaring Indonesia Rendah Emisi (JIRE)

[Edit](#)

Yayasan Mitra Hijau (YMH) adalah lembaga nirlaba yang bekerja menangani isu-isu



Peluncuran Jejaring Indonesia Rendah Emisi: Penguatan Kerjasama untuk Pembangunan Rendah Karbon

[Edit](#)



Pembangunan Rendah Karbon

[Edit](#)

Apakah yang dimaksud dengan pembangunan rendah karbon? Kapan bisa terwujud di

# Terima kasih